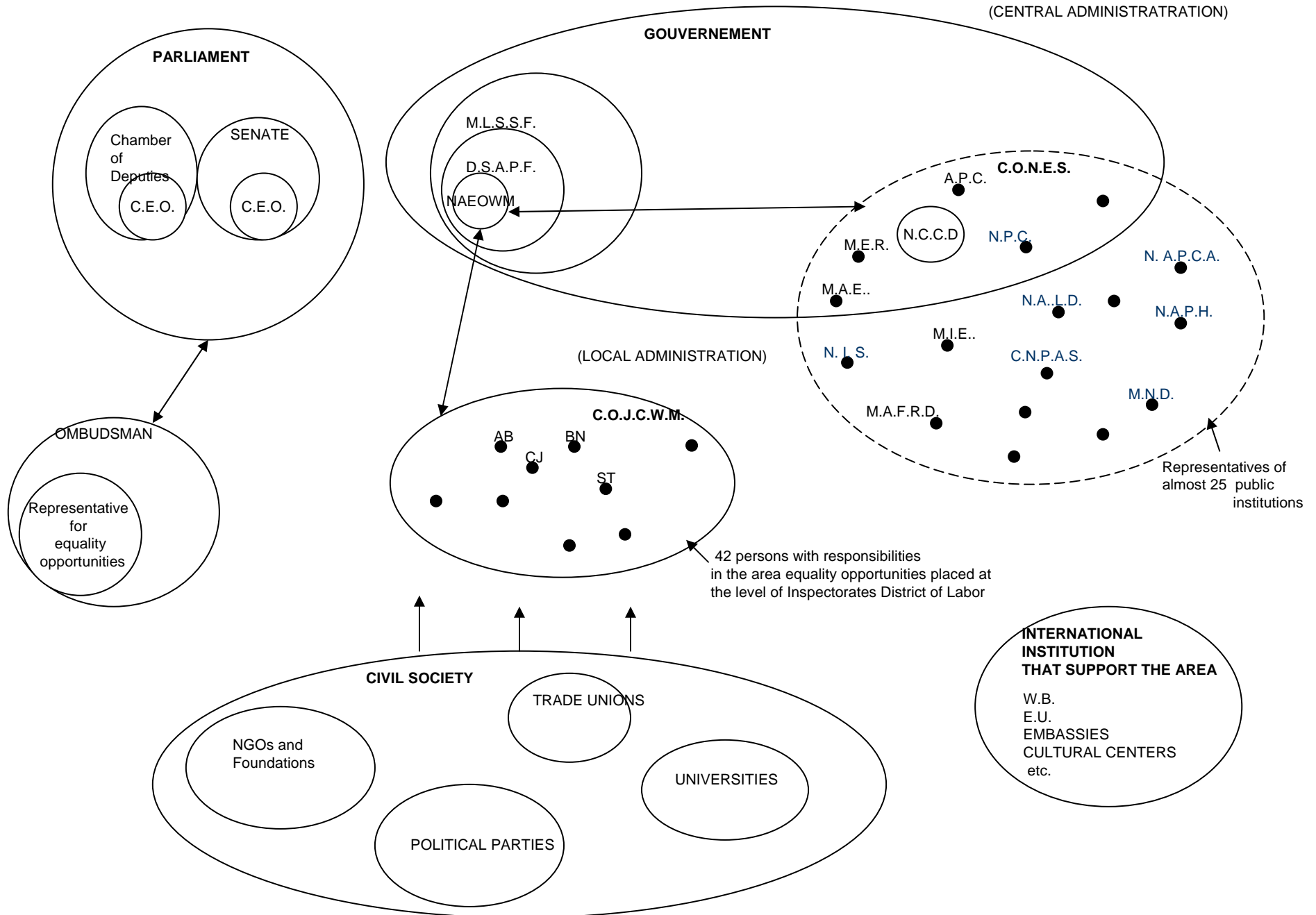


# NATIONAL MACHINERY FOR THE PROMOTION OF EQUAL OPPORTUNITIES BETWEEN WOMEN AND MEN IN ROMANIA

(CENTRAL ADMINISTRATION)



## LEGEND:

M.L.S.S.F.	Ministry of Labor Social Solidarity and Family
D.S.A.P.F.	Direction for Social Assistance and Family Policies
N.A.E.O.	The National Agency for Equality Opportunities between Women and Men
N.C.C.D.	The National Council for Combating Discrimination
D.C.	Chamber of Deputies
C.E.S.W.M	The National Commission for Equality of Opportunities between Women and Men.
N.C.E.W.M.	National Committee for Equality between Women and Men
M.E.R.	The Ministry of Education and Research
M.N.D.	The Ministry of National Defense
M.A.F.R.D.	The Ministry of Agriculture, Forest and Rural development
N.A.P.S.P.S.	The National Authority for Pensions and Other Social Protection Services
N.I.S	The National Institute of Statistics
N.A.C.P.	The National Authority for Consumer Protection
N.A.L.D.	The National Authority for Labor Distribution
N.A.P.H.	The National Authority for Person with Handicap
N.A.P.C.A.	The National Authority for Protection of Children's Rights
C.C.E.O.	County Commissions for Equal Opportunities between Women and Men
W. B.	The World Bank
E.U.	European Union